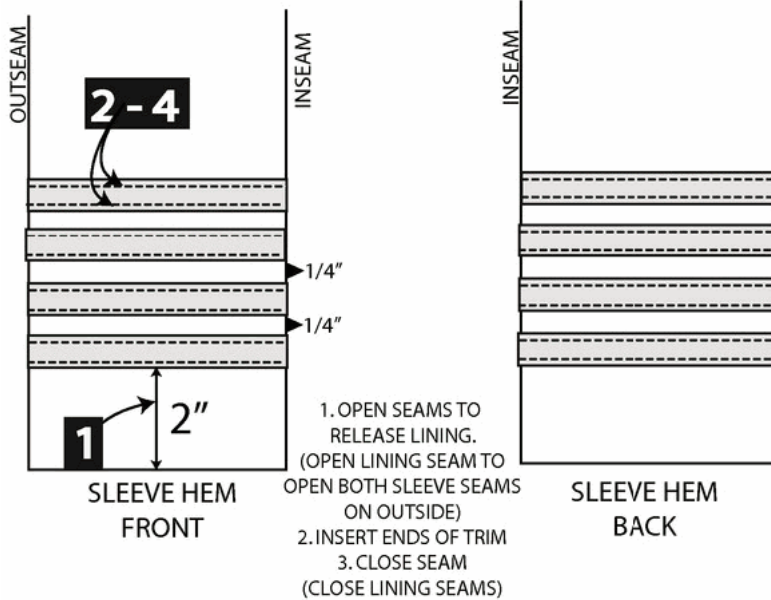
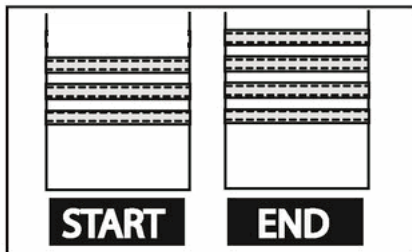


ADD 1 ROW OF BRAID TRIM TO SLEEVE, 2" UP FROM SLEEVE HEM (LINED), 4 STRIPES 1/4" APART

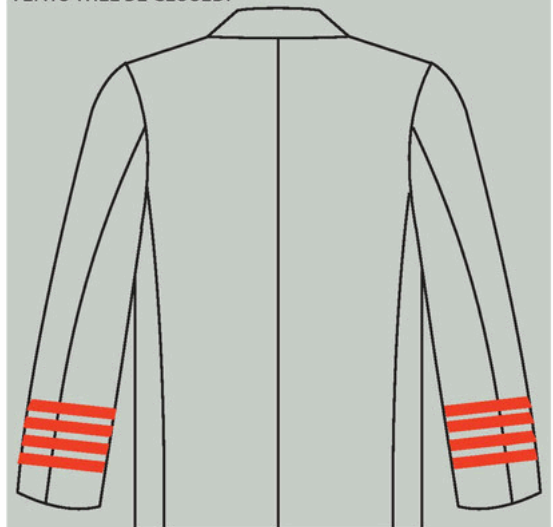
* IMAGES ARE GENERIC
* DETAILS MAY VARY



1. APPLY 4 ROWS OF TRIM TO SLEEVE BOTTOM, 2" UP FROM HEM, 1/4" APART
2. SINGLE NEEDLE LOCKSTITCH OR DOUBLE NEEDLE LOCKSTITCH TO YIELD 1/16" MARGIN FROM STITCH LINE TO EDGE OF TRIM
3. MATCH THREAD COLOR TO TRIM
4. MATCH BOBBIN THREAD TO GARMENT



INSERT STRIPES INTO SEAM AFTER DECONSTRUCTION. SLEEVE BUTTONS WILL BE REMOVED AND SLEEVE VENTS WILL BE CLOSED.



STRIPES GO ALL THE WAY AROUND THE SLEEVE. STARTING AND ENDING ON BACK SEAM